

+34 608 28 17 12

*Violett Realty*

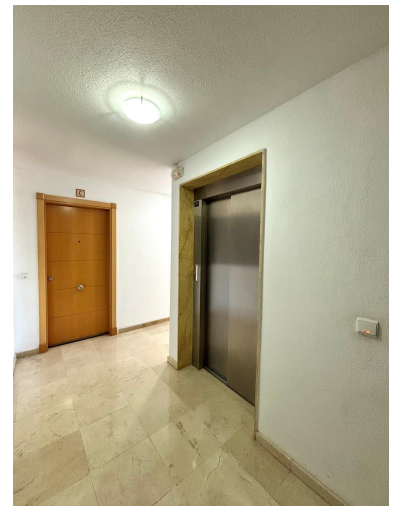
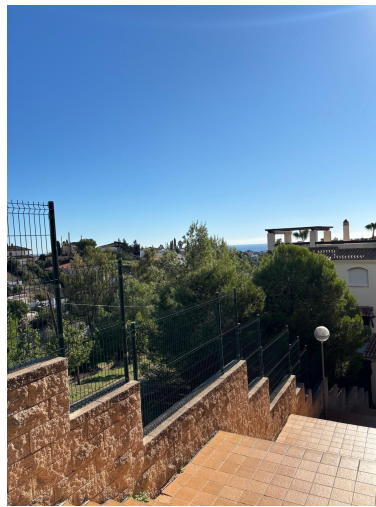
info@violett-realty.com

---

■■■■■■■■■■■■■■■■ ■ Benalmadena

■■■■■■■■■■■■■■■■: BLXR1214





---

■■■■■■■■■■: Spectacular 2-Bedroom Apartment with 100m<sup>2</sup> Terrace and Stunning Mountain Views

This impressive 170m<sup>2</sup> apartment offers spacious, bright living in a highly sought-after location between the coast and the village. Designed for comfort and convenience, it features two double bedrooms with fully fitted, space-saving wardrobes, a fully equipped bathroom, and a modern kitchen.

The residential complex provides a wealth of amenities for a premium lifestyle: beautifully landscaped gardens, a refreshing swimming pool, a modern gym, and paddle tennis courts for sports enthusiasts.

Everything you need is within easy reach: supermarkets, schools, and Xanit Hospital are just minutes away. With quick access to the A7 highway and regular buses just outside the front gates, getting around is effortless. For car owners, the underground parking space with lift access directly to your apartment is included, adding extra convenience to your daily life.

The true highlight of this property is the 100m<sup>2</sup> terrace, perfect for relaxing or entertaining while enjoying breathtaking mountain views. This apartment is an exceptional opportunity to enjoy comfort, style, and a fantastic location all in one.

---

