

Benalmadena Pueblo,
Benalmadena

83300276P



3

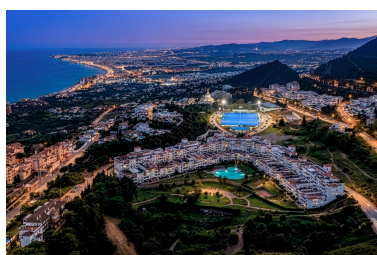
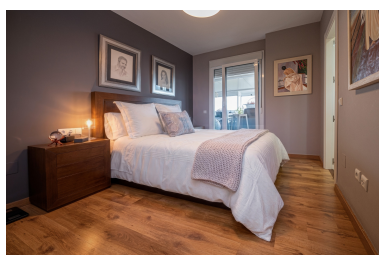
2

M²: 85

599 000 €

: 3rd

2026



■■■■■■■■■■: Discover this exceptional penthouse in the heart of Benalmádena, perfectly positioned to offer both tranquility and convenience. Just a 5-minute drive from the beach and only 10 minutes from Málaga Airport, this property is ideal as a permanent residence, holiday home, or investment opportunity.

The penthouse is presented in excellent condition, ready to move into, and boasts breathtaking panoramic views that can be enjoyed from its expansive private terrace. This outdoor space is truly a standout feature—generous in size and perfect for dining, entertaining, or simply relaxing under the Mediterranean sun.

Inside, the property offers three spacious bedrooms and two well-appointed bathrooms, combining comfort with practicality. The living areas are bright and welcoming, designed to make the most of the natural light and the stunning surroundings.

Set within a well-maintained and attractive urbanization, residents benefit from a large communal swimming pool and a padel court, adding to the lifestyle appeal. The property also includes two private parking spaces, adding convenience and value.

The location is equally impressive, with shops, supermarkets, and everyday amenities just moments away. Additionally, the penthouse is situated close to the iconic Buddhist Stupa, one of the most unique and peaceful landmarks on the Costa del Sol, enhancing the area's charm and exclusivity.

This is a rare opportunity to own a spacious, well-located penthouse with exceptional outdoor space and views in one of the most desirable areas of the Málaga coastline.

■■■■■■■■■■:

■■■■■■■■■■, ■■■ ■■ ■■■■, ■■■ ■■ ■■■■, ■■■■■■■■ ■■■■, None, ■■■■■■■■, None, None, ■■■■■ ■■ ■■■■■■■■