

Rustic house in Peñablanca, Nueva
Andalucia

Reference: 88500505P

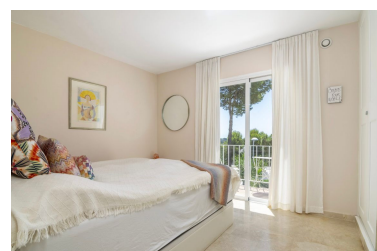
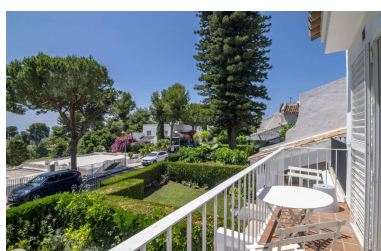
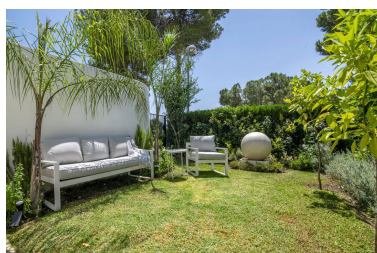


Bedrooms: 3
Status: Sale

Bathrooms: 2
Property Type: Rustic house
Parking places: by request

M²: 99

Price: 599,000 €
Printing day : 3rd June 2026



Overview: Charming Duplex Townhouse in the Prestigious Peña Blanca Urbanisation, Nueva Andalucía

Set within the highly sought-after Peña Blanca community in the heart of Aloha, this charming duplex townhouse offers an exceptional blend of comfort, convenience, and Mediterranean lifestyle. Nestled in a peaceful and well-established residential enclave, the property enjoys a prime location just minutes from Puerto Banús, golden beaches, and some of the Costa del Sol's most prestigious golf courses.

Positioned directly next to Aloha Golf Club and within walking distance of the renowned Aloha College, this home is perfectly suited for families, golf enthusiasts, or those seeking a quality holiday home or a strong investment opportunity in one of Nueva Andalucía's most desirable areas. The house is south-facing, ensuring plenty of sunshine throughout the day, especially in the private garden.

First Floor

The first floor features a bright and inviting open-plan living space, seamlessly combining a fully equipped kitchen, dining area, and a cozy living room with a fireplace. Large glass doors open onto a private terrace and garden, creating an ideal setting for outdoor dining, entertaining, or simply enjoying the Mediterranean sunshine. The fully gated plot is very pet-friendly, offering both comfort and security.

This level also includes a comfortable bedroom, a full bathroom, and a practical storage and laundry room, enhancing the home's overall functionality.

Second Floor

The upper floor comprises two well-proportioned bedrooms sharing a full bathroom. The master bedroom enjoys direct access to a private balcony with lovely sea views and uninterrupted vistas over the golf course—an ideal retreat with a calm and authentic Mediterranean atmosphere.

Community & Surroundings

The beautifully maintained community offers a pleasant swimming pool area set in a tranquil environment, surrounded by lush greenery and overlooking Aloha Golf Course. The urbanisation is gated and secure. Within walking distance, Puerta Verde provides a wonderful natural area ideal for walking and hiking.

This is a superb opportunity to acquire a well-located townhouse in one of Nueva Andalucía's most prestigious urbanisations—perfect as a permanent residence, a holiday getaway, or a high-potential investment property.

Features:

Resale, Air conditioning, Heating, Storage room, Alarm system, Mountain views, Private garden, None, None, Golf, Close to schools