

Apartment in Guadalmina Alta, San Pedro de Alcántara

Reference: 85500251P



Bedrooms: 2

Bathrooms: 2

M²: 140

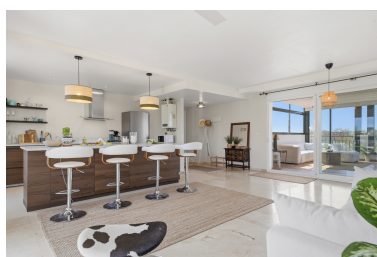
Price: 0 €

Status:

Property Type: Apartment

Parking places: by request

Printing day : 3rd June 2026



Overview: Welcome to Casa Mia, a beautifully appointed two-bedroom, two-bathroom penthouse set within the established residential enclave of Guadalupe Alta, just moments from the heart of San Pedro de Alcántara. Overlooking the fairways of Guadalupe Golf, the property offers a calm and private setting with open views and a natural connection to its surroundings.

Designed for both comfort and practicality, the apartment features two generously proportioned bedrooms and two modern bathrooms, complemented by a bright and inviting living area that flows seamlessly onto a glass-enclosed terrace. This creates a versatile space to enjoy throughout the year, whether for relaxed mornings or evening gatherings.

Defining feature of Casa Mia is its impressive outdoor living. The expansive rooftop terrace offers complete privacy and an ideal setting for sun-filled days and quiet evenings, with open views across the golf course and surrounding landscape.

The property is located within a gated community, offering a peaceful atmosphere and access to a more exclusive pool area reserved for select residences. Private underground parking with lift access adds further convenience.

Positioned within easy reach of San Pedro's vibrant boulevard, residents can enjoy a wide range of restaurants, cafés, shops and everyday amenities within walking distance. The beach is also close by, while several renowned golf courses are just minutes away, making this an ideal location for both relaxation and an active lifestyle.

Casa Mia presents a well-balanced home in one of the most desirable residential areas on the Costa del Sol, offering privacy, generous outdoor space and effortless access to everything San Pedro has to offer.

Features:

Resale, Air conditioning, Heating, Mountain views, Lift, Golf, Close to schools, Parking