

Villa in Nueva Atalaya, Estepona

Reference: 85500240P

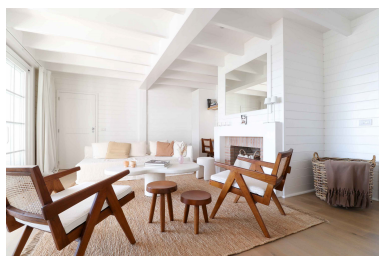
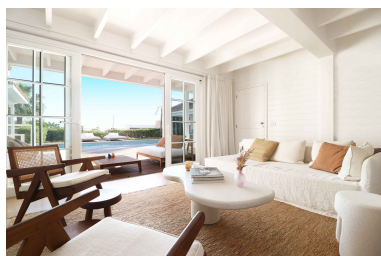
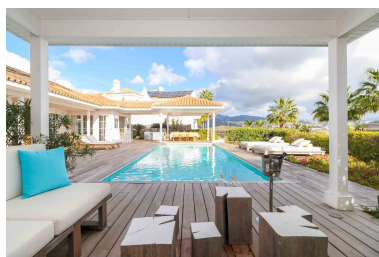
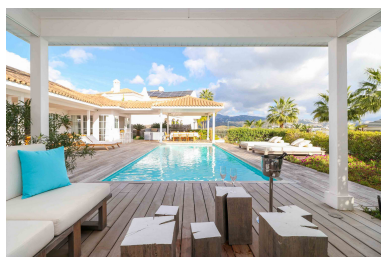


Bedrooms: 4
Status: Sale

Bathrooms: 2
Property Type: Villa

M²: 218
Parking places: by request

Price: 1,850,000 €
Printing day : 3rd June 2026



Overview:Nestled in the sought-after residential area of La Alquería in Benahavís, this charming villa offers a rare combination of character, privacy, and beautiful scenery. Elevated above the coastline, the property enjoys open views of La Concha mountain and the Mediterranean Sea, creating a tranquil setting that perfectly reflects the relaxed lifestyle of the Costa del Sol.

Built with a solid wood structure that adds warmth and timeless charm, the home welcomes you into bright and inviting interiors. The spacious living room is centered around an elegant fireplace, creating a warm and comfortable atmosphere, while large glass doors open directly onto the terraces and pool area, allowing natural light to flow throughout the home.

The villa features a fully fitted open-plan kitchen with a breakfast bar and dining area, designed for both everyday living and entertaining. The layout connects seamlessly with the living space and leads directly onto the outdoor terraces, creating an effortless transition between indoor comfort and outdoor living.

All arranged on one level, the property offers four bedrooms and two and a half bathrooms. The spacious master suite includes a private dressing area and an en-suite bathroom, while three additional guest bedrooms share a well-appointed family bathroom. A separate guest toilet provides added convenience for visitors and family.

The outdoor areas are designed for relaxation and entertaining. At the center of the garden is a saltwater swimming pool surrounded by expansive wooden terraces, sun loungers, and shaded lounge areas. A dedicated BBQ area and covered outdoor dining space create the perfect setting for long Mediterranean lunches or relaxed evenings with friends and family while enjoying the surrounding mountain and sea views.

Set on a generous 1,014 m² plot with a built area of approximately 218 m², the property also includes a large lower level featuring a garage with space for up to six cars, a laundry area, and ample storage space. The villa also offers excellent potential to extend the property by adding an upper floor or creating an independent guest apartment behind the garage, further enhancing its lifestyle appeal and investment potential.

Located just minutes from golf courses, international schools, beaches, and the vibrant destinations of Marbella and Puerto Banús, this villa offers the perfect balance between peaceful hillside living and easy access to the best of the Costa del Sol.

A welcoming home full of character and potential, ideal as a permanent residence, a holiday retreat, or an investment in one of the most desirable areas of southern Spain.

Features:

Air conditioning, Heating, Resale, Storage room, Alarm system, Sea views, Mountain views, Private garden, None, Pool, None, Golf, Close to schools, Parking